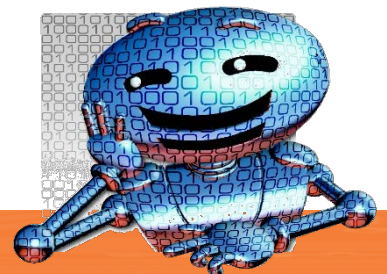


# FlashRunner 2.0 LAN Next Generation In-System Programmer



**FLASHRUNNER**  
In System Programming Design your needs



# Fast and secure

## Overview

FlashRunner LAN is the most popular programmer used in the programming industry, On the market from the last nine years, FlashRunner LAN has obtained an incredible process.

SMH Technologies made a huge investment to realize its evolution, employing the most advanced and highly patented technology from FlashRunner 2.0.

FlashRunner LAN 2.0 NEXT GENERATION is now available with high performances and unique flexibility, configurable from 1 to 4 independent and parallel channels which can be increased step-by-step through an online remote session.

Designed with thin and compact size, this programmer has been specifically engineered to easily suit in the fixture, simplifying the hardware integration process.

## Why FlashRunner

FlashRunner LAN 2.0 NEXT GENERATION combines the most advanced technology and the decennial experience of SMH Technologies in the ISP programming, providing at least three years

of technological competitive advantage in the market.

The programmer's new powerful technology can be easily integrated inside the fixture. In addition, the user has the possibility to enable from 1 to 4 independent and parallel channels according to his necessities. Thanks to this extreme flexibility, the cost of the solution will adjust to the production needs, optimizing the programmer's efficiency also in respect of the economic investment.

## Main Features

- Fast Programming Speed
- Easy fixture integration
- Ultra-compact design
- Standalone control
- Serial numbering
- Antipiracy system
- Data-integrity function
- High connectivity
- User friendly user interface (interactive GUI)

## Hardware Features

- Independent ISP lines for each channel
- 8 digital I/O lines
- Two programmable output voltage lines
- 1 GB on-board Dynamic Memory
- Up to 256 GB storage memory
- On-board timekeeper and calendar for time-stamped log file
- USB Communication Interface (optoisolated)
- Power voltage and current measure for each channel
- Integrated relay barrier control
- 9 to 14V power supply input
- Operation status LEDs for each channel
- Two 48 pin DIN In-System programming connectors

## Software Features

- FR2.0 NXG WorkBench: the new user friendly Graphical User Interface (Windows and Linux compatible)
- Based on Embedded Linux operating system
- Interface Library to control the programmer directly from user's test applications
- Serial numbering
- Optional customer binary file cryptography to ensure antipiracy protection
- Log file and Production Report file
- ISP channels expansion activation license
- Memory dump and compare functions
- Easy integration with C/C++/DLL
- ASCII based commands.

## Related Services

FlashRunner LAN 2.0 NXG special features allow the programmer to share its channels in order to program big-size memories such as eMMC and NAND memories by employing the required programming ISP lines.

## A new friendly interactive GUI (Graphic User Interface)

New GUI interface cuts off overall configuration efforts, guiding customers creating a working project in few mouse clicks and detecting mismatches between target device and customer firmware, as well as power supply setup.

## Different Configurations

FlashRunner LAN 2.0 NXG hardware capability allows the user to choose the configuration from 1 to 4 independent and parallel channels, according to the production project.

It is possible to purchase FlashRunner LAN 2.0 NXG with one enabled channel and add up to 4 channels through a simple online remote session. In this way, the cost of a solution will adjust to the production needs, optimizing the programmer's efficiency also in respect of the economic investment.

Do you also know our other products?

**Amongst others:**

**AOI and SPI systems**

**Diverse feeding solutions like Tube Feeder, Tray handling solutions, Tape Feeder for special machines, Axial- and Radial Feeder, Vibratory Feeder**

**Taping systems, systems for singulation and feeding of components and special parts**

**Coating systems, Die Attach systems, systems for Heat Bonding and LCD Module Equipment, Depaneling systems**

**Marking systems like Label Feeder,  
as well with integrated printer (POD), Labels, Label Cells,  
Laser Cells and Label Printers**

**We are looking forward to your challenge!**

**pb tec solutions GmbH**  
Max-Planck-Straße 11

63755 Alzenau (Germany)

T.: +49 6023-94771-0

F.: +49 6023-94771-29

info@pbtecsolutions.de - www.pbtecsolutions.de