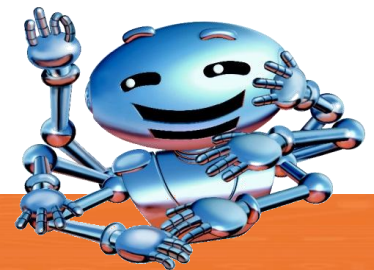


GAR1200 Auto Router



Ideal for depanelizing of PCB's

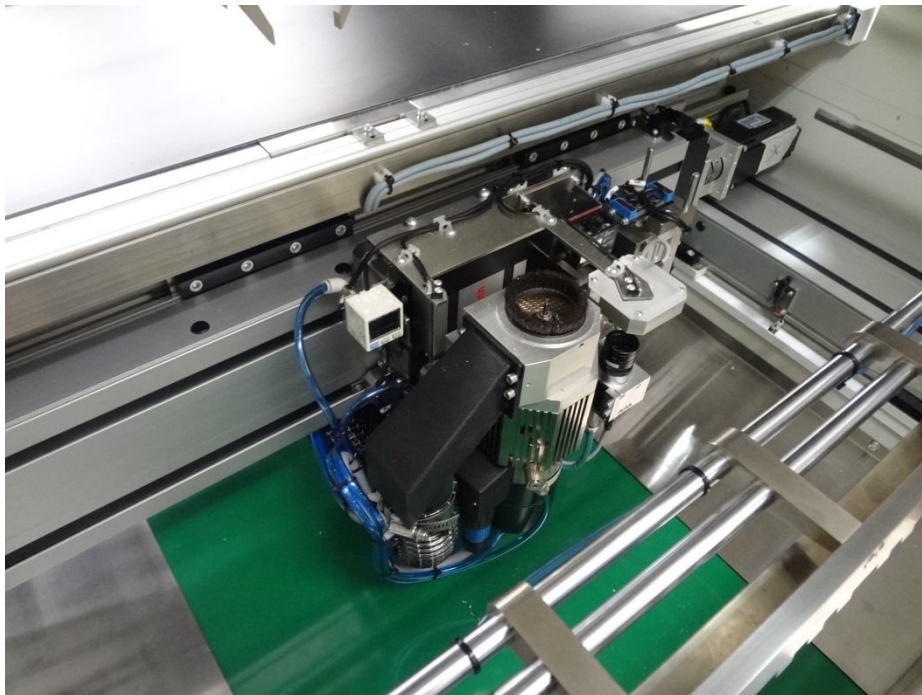
GAR is an inline router machine specially designed to route (de-panelize) printed circuit board assemblies (PCBA) into individual assemblies.

The GAR has two worktables accommodating a maximum PCB size of 350mm x 310mm and with a dual pick and place head for loading and unloading of the PCB.

A new Graphical User Interface (GUI) with Getech's "Move, Teach & Cut" advanced control software provides user friendly "visual" programming for rapid and accurate online programming.

Features:

- Large range of panel sizes up to 350 mm x 310 mm
- Powerful servo motors powered axis
- Dual vacuum blowers
- Small machine footprint



Specifications

Routing capability

Non routing speed	1.000 mm/sec
Repeatability	+/- 0.1 mm
Cutting Speed	100 mm/sec max

Positioning System

Configuration	X, Y, W, Z & E axis
Manipulator Motors	AC brush less servo motors
Manipulator Repeatability	± 20 µm
Resolution	± 10 µm

Pick and Place Effector

Type	Vacuum
------	--------

Workstation

Board Positioning	Dual workstation with nest fixture or pin fixture
Panel Location	Located by tooling holes or edges of PCB
Loading	Automatic Loading
Unloading	Automatic Unloading
Panel Size	350 mm x 310 mm
Panel Thickness	0,5 mm – 8,0 mm
Component height top	max. 10 mm
Component height bottom	max. 20 mm

Spindle System

Spindle motor	0.15 kW spindle with ESD Ceramic bearings
0.5kW spindle (option)	
Tool Change	Automatic tool change (option)
Cooling	Ambient cooled
Router bit	Shank size 3.175 mm (1/8")

Dust filtration system

Power	2 x 3,0 kW rotary vane vacuum blower
Filtration	3 stage filtration with disposable filter bag (10 microns)

Vision system

Video camera	High resolution CCD video camera, PCB Fiducial capturing (Optional)
--------------	--

Programming

On line	Vision assisted point to point manual teaching
Editing Function	Dry run vision assisted / test run mode
Variable Functions	Tool bit diameter compensation, Filter change interval (distance) setting. Other options available.

Safety Features

"E" Stops, Spindle stop, Spindle motor overheat & Servo overload detection, tool broken / dropped detection, enclosed work area and doors with sensors.

Conveyor System

Incoming Conveyor	Fixed
Front Rail	Manual width adjustment
Back Rail	940 mm to 965 mm (37" ~ 38")
PCB Conveyor Height	Left to Right or Right to Left
PCB Flow Direction	SMEMA
Communication	Customer specifications
Outgoing Conveyor	

Machine dimensions, weight and utilities

Machine size W/D/H	1.75 x 1.45M x 1.70M
Weight	1.200 kg
Power Supply	(options available)

Do you also know our other products?

Amongst others:

AOI and SPI systems

Diverse feeding solutions like Tube Feeder, Tray handling solutions, Tape Feeder for special machines, Axial- and Radial Feeder, Vibratory Feeder

Taping systems, systems for singulation and feeding of components and special parts

Coating systems, Die Attach systems, systems for Heat Bonding and LCD Module Equipment, Depaneling systems

**Marking systems like Label Feeder,
as well with integrated printer (POD), Labels, Label Cells,
Laser Cells and Label Printers**

We are looking forward to your challenge!

pb tec solutions GmbH
Max-Planck-Straße 11

63755 Alzenau (Germany)

T.: +49 6023-94771-0
F.: +49 6023-94771-29

info@pbtecsolutions.de - www.pbtecsolutions.de