

# TTC

## Track, Trace & Control Solutions for the Electronic Industry



The Cogiscan suite of TTC – *Track Trace Control* – solutions includes worldclass Material Control, Traceability and TTC Analytics to achieve significant improvements in visibility, quality and productivity.

These are the most critical applications for electronics assembly because they deliver the greatest return on investment and provide a strong competitive edge to their users.

All Cogiscan TTC applications are built upon a robust data collection layer called TTC Middleware. It is the layer that connects the shop floor with the Cogiscan TTC application platform, and/ or various applications from different vendors.

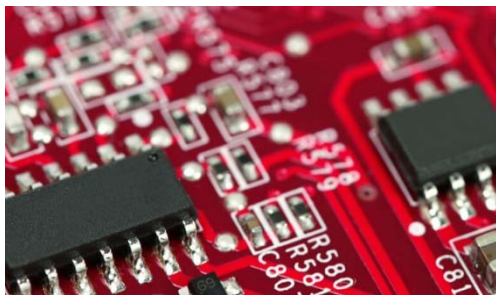
Due to its open architecture the real-time data can be shared to increase the value of enterprise systems such as PLM, MES, ERP and Business Analytics.

The TTC solutions are scalable & modular and totally adapted to the individual requirements of the different productions.

## Material Control

Components represent the majority of the cost of a circuit board, effective material control becomes crucial for any manufacturer to stay competitive. Our solution for material control provides the customer many advantages:

- Real-time visibility
- Improved quality
- Elimination of human errors



## Traceability

In today's world, complete and accurate traceability has become mandatory to reduce the cost and liability issues associated with product warranty and recalls.

- Troubleshooting and product quality improvement
- Fast and precise recall management
- Process compliance demonstration; simplified client audits



## TTC Analyse (Factory Intelligence)

Cogiscan's *Factory Intelligence* monitors productivity per machine and per line, in real-time, throughout your factory, and also from site to site.

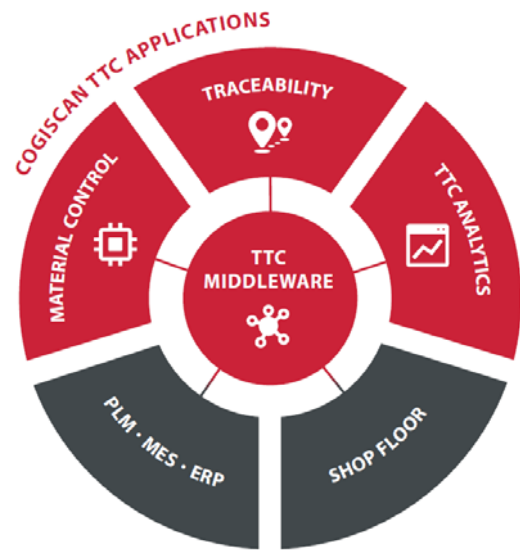
- Establish objective and measurable Real-time KPIs with drill-down views at various levels - from factory, to line, to machine
- Leverage KPI data to drive continuous process improvement opportunities
- Increase productivity through enhanced machine/line management
- Reduce waste



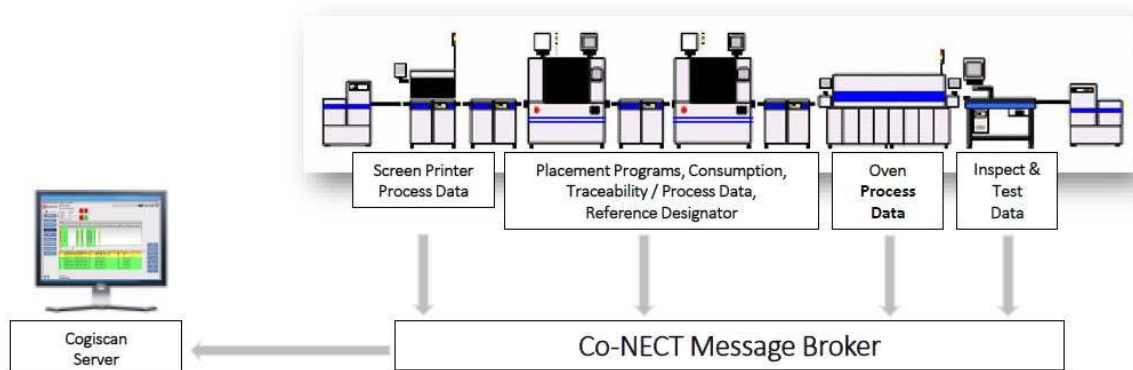
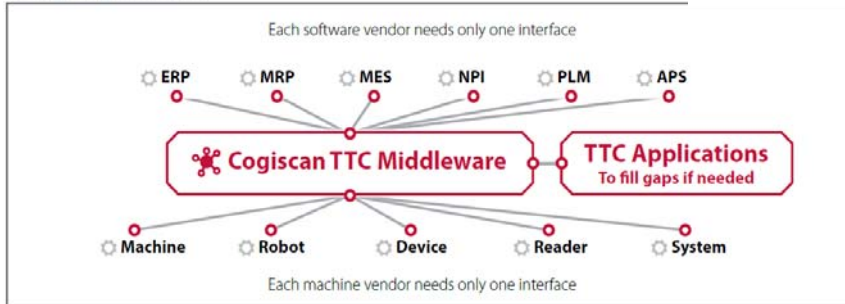
## TTC Middleware

Complete and Accurate Real-Time Data Collection This robust connectivity layer extracts high quality real-time data from your shop floor. It can also exchange data with existing enterprise systems such as PLM, MES, ERP and Analytics.

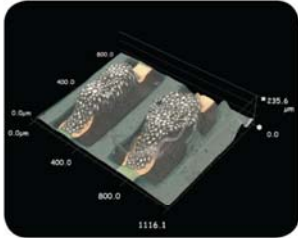
- Integration supported by your equipment provider
- Faster implementation means faster ROI
- High quality data is mandatory for accurate Material Control, effective
- Traceability and precise TTC Analytics



### Using Cogiscan TTC



# Our Product Portfolio



AOI and SPI Systems



Feeding Solutions



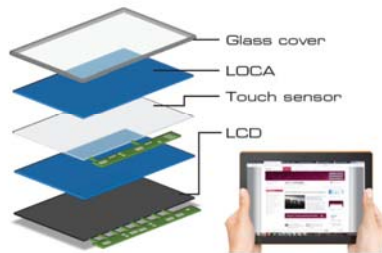
Labels and Label Feeder/Marking Solutions



Solutions for Traceability, Analysis and Interfacing



In-System Programming



LOCA (Liquid Optical Clear Adhesive)



ACF Bonding



Nozzle Cleaning



Permalex® Squeegees



Bare Board Cleaning