

Tape Feeder and Accessories for Special Machines and Robotic Applications



OF series tape feeder for an automated feeding of electronic and mechanical components

Pocket Tape Feeders of the QF series: The ergonomic light weight for an absolute reliable operation. They need extremely little maintenance and can feed as well tape widths up to 120mm as also components which are packed in deep pockets.

The low-friction motor drive is electronically controlled and thus provides a high-precision, reproducible pickup position.

During setup of the material the transport can be controlled forwards and backwards manually via control buttons. In this way the requested position of the pockets for the pickup can easily be adjusted and no components are lost during the setup procedure.

The standard QF feeders can be equipped with 15" and 18" reels. Optionally, models for larger reel diameters (up to 27") are available. The maximum pocket depth is between 4mm and 22mm, depending on the tape size (8mm-120mm).

Tape Compatibility:

EIA-481-material conformal

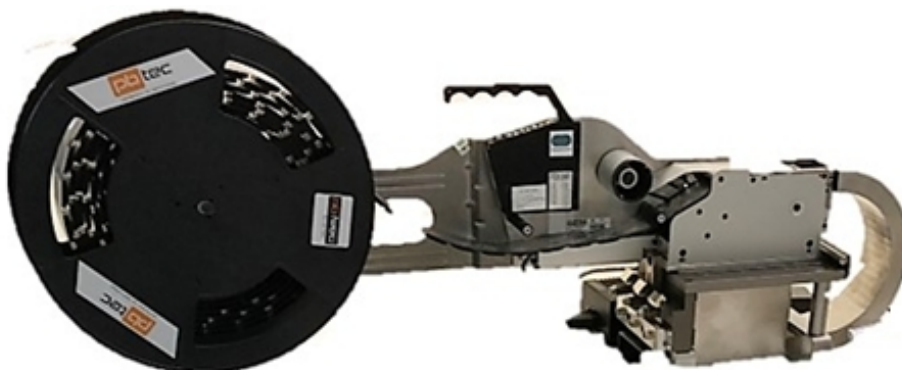
Main features

- Drop in compatibility, also for special applications
- Electronic pitch selection
- Smooth tape index
- Reversible tape index drive
- Extended pocket depth
- Improved tape window design
- On-board self-diagnostics and maintenance tools
- Individually adjustable pick-point

Available Feeder sizes:

Tape Width	Max. Reel Size	Max. Pocket Depth
8 mm	15"	4 mm
12 mm	15"	6,5 mm
16 mm	15" or 18"	19 mm
24 mm	15" or 18"	19 mm
32 mm	15" or 18"	19 mm
44 mm	15" or 18"	19 mm
56 mm	15" or 18"	19 mm
72 mm	18"	19 mm
88 mm	18"	19 mm
104 mm	18"	22 mm
120 mm	18"	22 mm

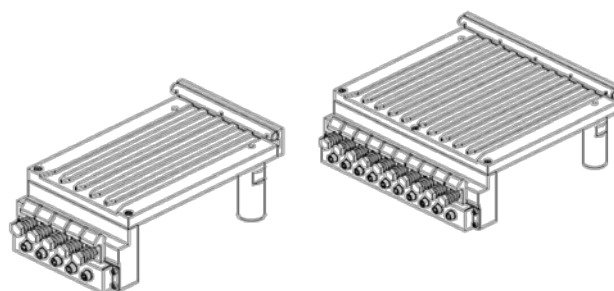
Tape Feeder on a Robotic Interface with tape return channel



Robotic Interface

For an easy electrical and mechanical integration of one or several QF feeders into a special machine.

Available with five or ten slots.



Tape Return Channel for empty tapes out of Tape Feeders



different widths available

Cutter for empty tapes EU900SA and EU570SA

For a clean disposal of your empty tapes



Specifications

Cutting mechanism	Rotational, horizontally moving blades
Cutting speed	76 mm / sec.
Pause time	2, 6, 10 seconds, preset at factory
Effective cutting length	755 mm – EU900SA 425 mm – EU570SA
External dimensions	900 x 220 x 400 (L x W x H) - EU900SA 570 x 220 x 400 (L x W x H) – EU570SA
Collection Bin	810 x 215 x 172 (L x W x H) – EU900SA 485 x 215 x 175 (L x W x H) – EU570SA
Weight	28 kg – EU900SA 21 kg – EU570SA
Noise level	Lower than 70 dB (A)
Main power supply	230 VAC (Single Phase, 50/60 Hz)
Electric consumption	100 W
Motor Specifications.	15W, 230VAC 50/60Hz, Gear Head 1/40

Our Product Portfolio



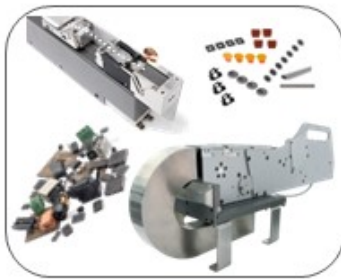
Feeding Technology



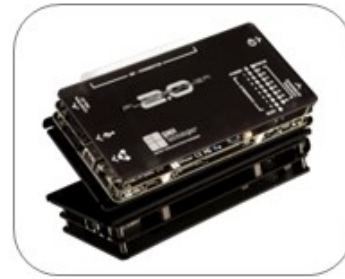
Taping Systems



Marking Solutions



Standard and
Special Applications



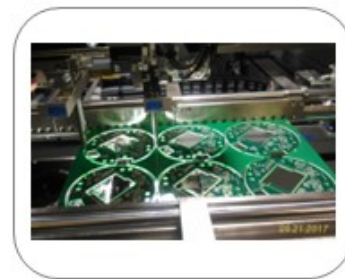
In-System
Programming



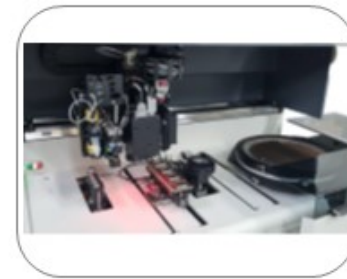
Reflow Inline
Camera



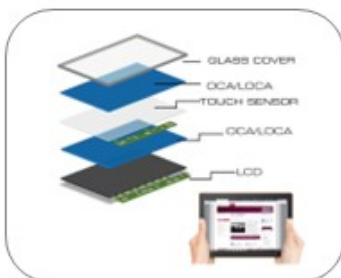
Bare Board
Cleaning



Depaneling



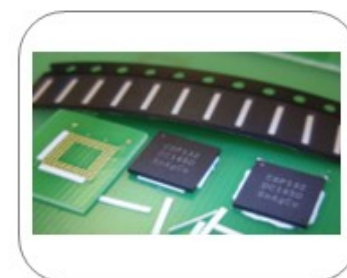
Die Attach
Systems



Optical Bonding



Thermal Bonding



Place-N-Bond
Underfilm