

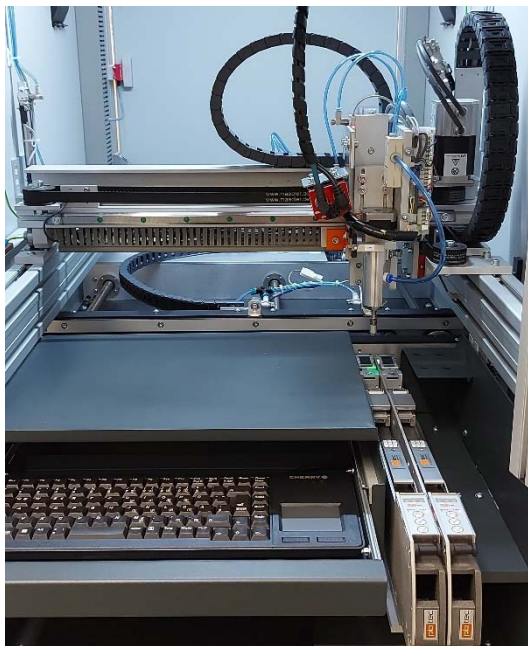
# Inline Label Cell BCL-650



Many companies necessarily need to label their PCBs already in the beginning of the production line.

The label cell BCL-650 provides a compact alternative for a reasonable price. It can either be used at the beginning of the production line to label bare boards or offline for marking of already populated boards.

The integrated label feeder feeds the pre-printed labels or Kapton parts and the positioning system automatically and precisely places them on the PCB.



- maintenance door with inspection window
- one flat belt transport segment with pneumatic stopper
- pneumatic fixation and motorised width adjustment (target value setting via program) freely programmable
- high-quality industrial PC
- SMEMA interface
- SPS Siemens S7-1200

#### Specifications:

Description	Value / Explanation
supply voltage	230V, 50Hz
air pressure	6 bar, oil free
outer dimensions (lxwxh)	appr.770x1400x1900mm
placement speed	up to 0.6m/s
marking area (lxw)	400mmx365mm
signals	tower light/horn
programming of pick-up and placement point	GUI to program pickup and any number of placement points
possible PCB size (lxw)	80mmx70mm up to 450mmx365mm
PCB thickness	0.8mm up to 4mm
width adjustment	automatic motorized adjustment
max. placement height	top 5mm, bottom 5mm, can optionally be extended
max. PCB weight	3kg
operation	Via PC, integrated monitor and compact keyboard

#### Main Advantages:

- flexible solution for automated labelling either of bare boards or populated PCBs
- compact design, only 770mm space needed
- label sizes from 3x3mm
- can also be used to apply die cut parts

#### Included in the basic system:

- 1 Slimline (LFS) or Mediumline (LFM) Label Feeder (LFS 15mm, LFM 30mm max. liner width)
- powder-coated sheet steel frame
- integrated control cabinet

#### Options:

- extension of max. PCB size up to 470mmx465mm (lxw)
- HERMES interface
- scanner to read the DMC
- vision system to read and verify DMC and plain text
- 360° Nozzle for a freely programmable positioning of the label between 0° and 360°
- MES-connection
- integration of a second label feeder for placement of two different label dimensions
- extension of clearance
- faster drives for the x/y axis system (speed-up to 1m/s.)

## Auto-apply labels and Die Cut Parts – many sizes and materials available

Our label call, combined with auto-apply labels from IDENTCO, provides a simple, steady, precise and cost-effective automatic marking solution. We solve your space problem with label sizes already from 3x3mm!

The labels are available in white and green, matte or glossy, and they can be pre-printed in several different colours.

The transparent liner is especially designed for automatic applications, as i.e. with label feeders or label cells.

All labels for the electronic Industry are suitable for high temperature applications, they are certified according to UL and CSA and guarantee ROHS conformity.

Furthermore, there are ESD compliant labels available as well as special materials for use with chemicals. To eliminate damages by static buildup in the production area, IDENTCO utilizes the **REEL-e™**, an anti-static plastic reel.



**Standard label sizes** available ex works or in short term – pre-printed or blank, i.e.:

Label size / mm	Liner width / mm
3.99 x 3.99	11.43
5.00 x 5.00	11.43
6.35 x 6.35	11.43
7.00 x 7.00	11.43
8.00 x 8.00	11.43
9,53 x 9,53	12.70



Many further dimensions can be proposed on request.

### Die Cut Parts

Our Kapton die cut parts can be used i.e. to cover components or sensitive areas on PCBs. Because of their special adhesive, they can be easily removed without any residue.

Special shapes can be proposed as well as die cut parts with pull tabs.

## Our Product Portfolio



Feeding Technology



Taping Systems



Marking Solutions



Standard and Special Applications



In-System Programming



Reflow Inline Camera



Bare Board Cleaning



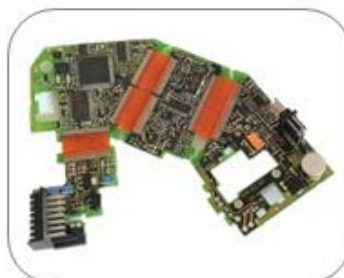
Depaneling



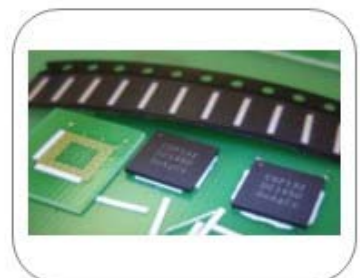
Die Attach Systems



Optical Bonding



Thermal Bonding



Place-N-Bond Underfilm