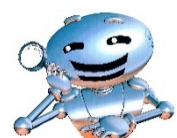


UI-HICAM 3 Reflow Inline Video Camera



Description

The Reflow Inline Camera is currently the world's only system for recording videos in a reflow oven. Data from up to three thermocouples and the vibrations are recorded in parallel during the process.

The different measurement data (video, temperature and vibration) can be stored and evaluated offline.

Alternatively, two camera modules are available for video recording:

- Close-up camera module: can record videos of the behavior of individual components on the PCB during the reflow process.
- Wide-angle camera module: can film the interior of the reflow oven or record the behaviour of the components on the bottom side of a double-populated PCB

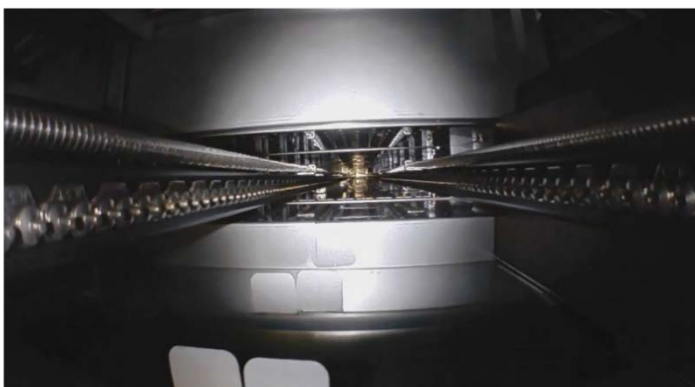
During the subsequent evaluation, the measurement data and video recordings can be linked to each other.

The graphical display of temperature and vibration data helps to assign and evaluate interesting video sequences.

It is possible to analyze the process and - for example in the case of vibration disturbances - to localize and eliminate causes.



Close-up camera filming a component on a PCB



Wide angle camera module taking a video inside the reflow oven

Data Analysis

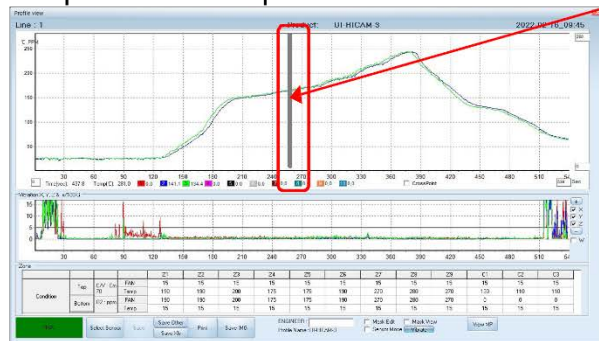
Graph shows only temperature data



1. The red selection screen is displayed after clicking "View MP"

Manual sliding of the selection aperture on the graphs controls direct access to the corresponding film scene.

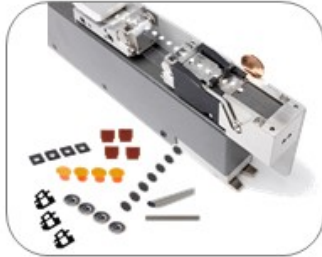
Graph shows temperature and vibration data



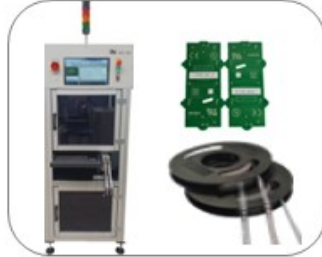
Specifications

Video resolution	HD/1280 x 760/25fps
Video length	10 minutes per file
Sampling rate for temperature and vibration sensor	0.3 seconds
Operating temperature range	0 – 285°C.
Vibration measurement unit	mg (1g = 9,08665m/Sek. ²)
Fixable length of the PCB	10mm–360mm (>360mm on request)
Max. PCB thickness	5mm
Highest point above transport level	27mm (close-up module)
Dimensions (L x W ; H)	
Hot case:	300mm x 130mm - 265mm (mechanically adjustable); 37mm high
Close-up camera:	320mm - 575mm x 200mm or 250mm; 46mm high
Wide angle camera:	172mm x 120mm - 275mm (mechanically adjustable); 42mm high

Our Product Portfolio



Label Feeder, also for special parts



Label/ Laser Marker and labels



Tape Feeder and accessories



Tray Handler / Reject Parts Conveyor



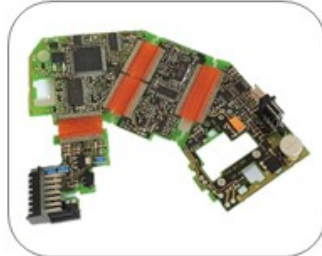
Manual Taping Systems



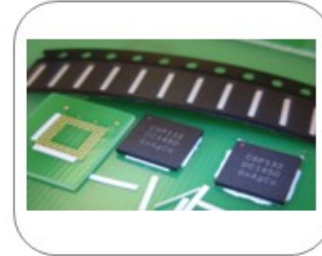
Automatic Packing Systems



Optical Bonding



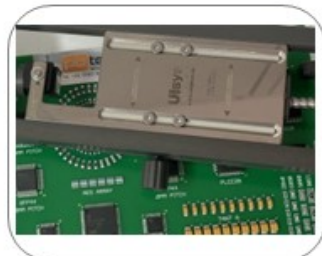
Thermal Bonding



Place-N-Bond Underfilm



Univers. In-System Programmiers



Reflow Inline Video Camera



Depaneling Systems

www.pbtecsolutions.de